

APAMAK FOREIGN TRADE LTD CO

APM 330 REELING MACHINE



Power motion with auto speed
control with inverter

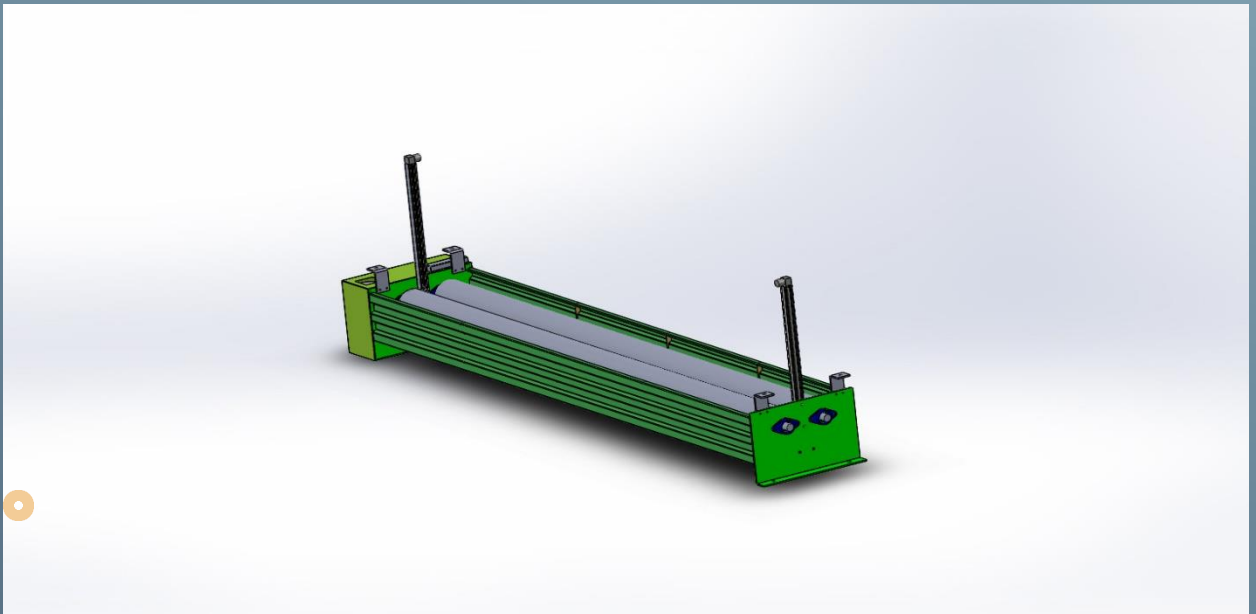


Easy control panel

Veziroglu Mah.1 .sok.no 174/2 Sehzadeler/Manisa/TURKEY
www.apamak.com

APAMAK

Type 330



Features:

Woven fabric bathing machine for all types of automatic looms for brands; Sulzer, Piconol, Toyoda, Tsudokama .

Denim, Fine Fabrics, Technical Fabric, Non Wovens available to batch

Custom built version for wider working width 115cms to 330 cms

Synchronize for fabric even tension rolling

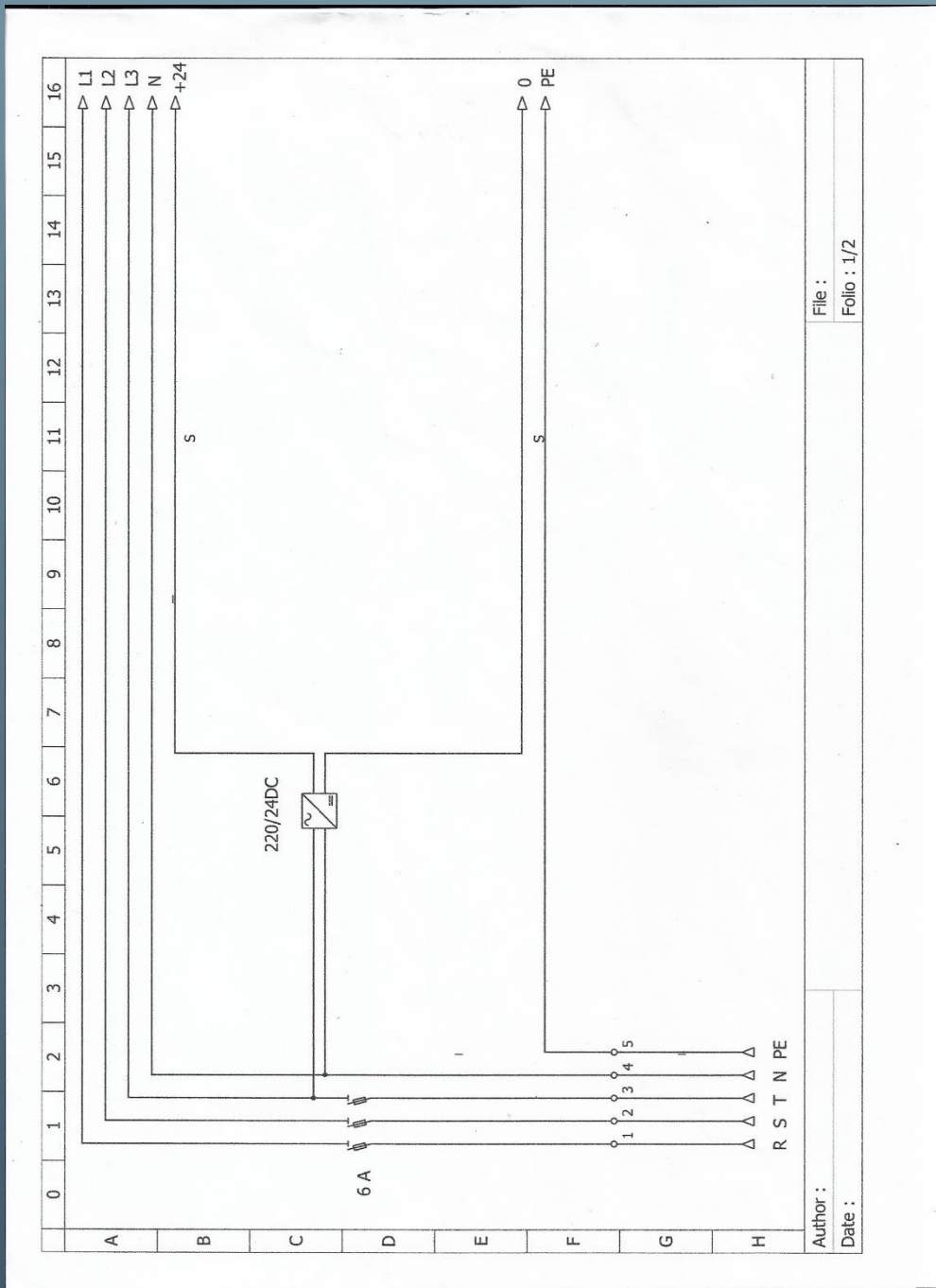
WOVEN FABRIC REELING MACHINE

TECHNICAL SPECIFICATIONS

TYPE	APM 330
MAX WORKING WIDTH	330 CMS
OUTER DIMENSIONS	
WIDTH	76 CMS
LENGTH	403 CMS
HEIGHT	50 CMS
MAX BATCHING DIAMETER	160 CMS
MACHINE TOTAL WEIGHT	685 KGS
ELECTRICAL CONSUMPTION	1,1 KW PER HOUR
ELECTRICAL SUPPLY	400 V AC 50 Hz 2,8 Amp
START & SYHNCRONE SUPPLY FROM WEAVING MACHINE	24 V DC
BATCHING SPEED & DIA INVERTER CONTROL BY	DELTA VFD-EL & ALFA ELECTRONICS
MANUFACTURING YEAR	2021

MADE IN TURKEY

APAMAK



APAMAK



Syhnchronisation sensor

